

## CTP-L1-AP-U-HA-AE-SA-126912 (ORDER NO. 126912)

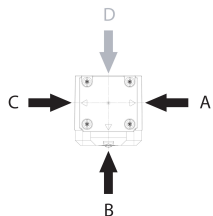
### Transponder-coded safety switch CTP-AP, M12, with escape release

- ▶ Safety switch with guard locking and integrated evaluation electronics
- ▶ Short circuit monitoring
- ▶ 2 safety outputs (semiconductor outputs)
- ▶ Up to category 4/PL e according to EN ISO 13849-1
- ▶ With plug connector M12
- ▶ Unicode
- ▶ Door monitoring output
- ▶ With escape release
- ▶ Approach directions A, B and C (delivery state)



### Description

#### Approach direction



Figure

Horizontal

Can be adjusted in 90° steps

#### Unicode evaluation

Each actuator is highly coded (unicode). The switch detects only taught-in actuators. Additional actuators can be taught-in. Only the last actuator taught-in is detected.

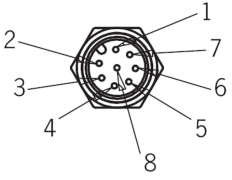


#### Guard locking type

CTP-L1 Guard locking actuated by spring force applied and power-ON released (closed-circuit current principle)

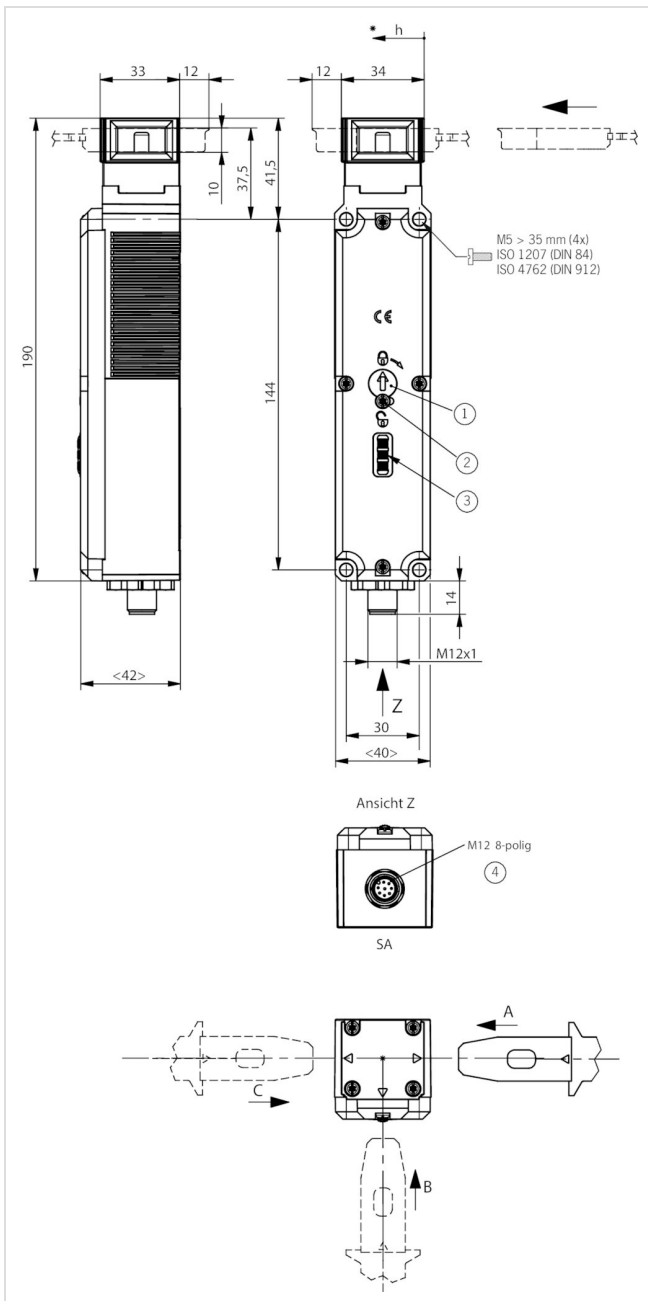
#### Escape release

This is used for manual release of guard locking from the danger zone without tools.

## Connector assignment

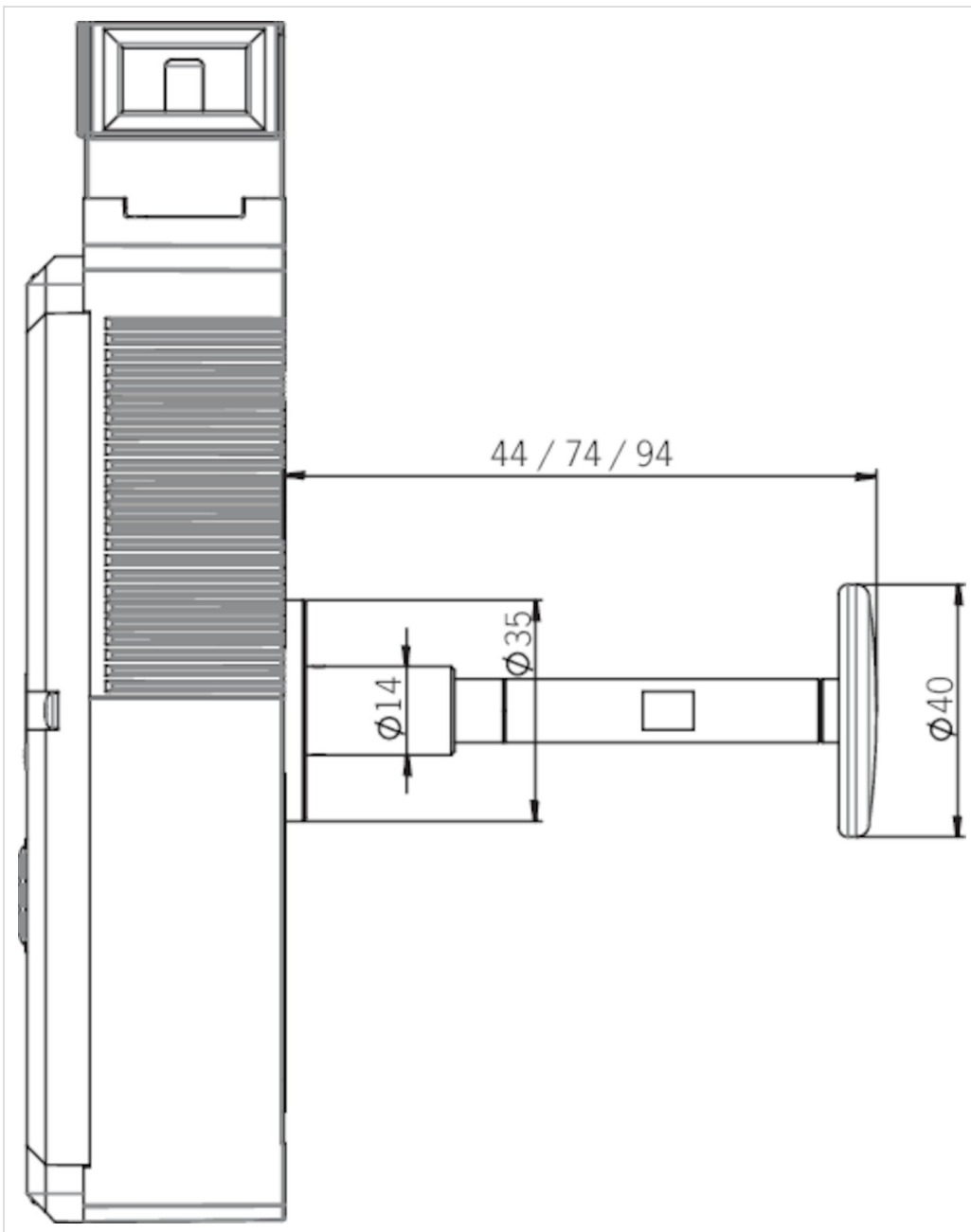
Plug connector (view of connection side)	Pin	Designation	Function	Conductor coloring of connecting cable
	1	IMP	Operating voltage of guard locking solenoid, 24 V DC	WH
	2	UB	Operating voltage of AP electronics, 24 V DC	BN
	3	F01A	Safety output, channel 1 	GN
	4	F01B	Safety output, channel 2 	YE
	5	OI	Diagnostic output	GY
	6	OD	Door monitoring output	PK
	7	0 V UB	Operating voltage of AP electronics 0 V	BU
	8	IMM	Operating voltage of guard locking solenoid, 0 V	RD

## Dimension drawing

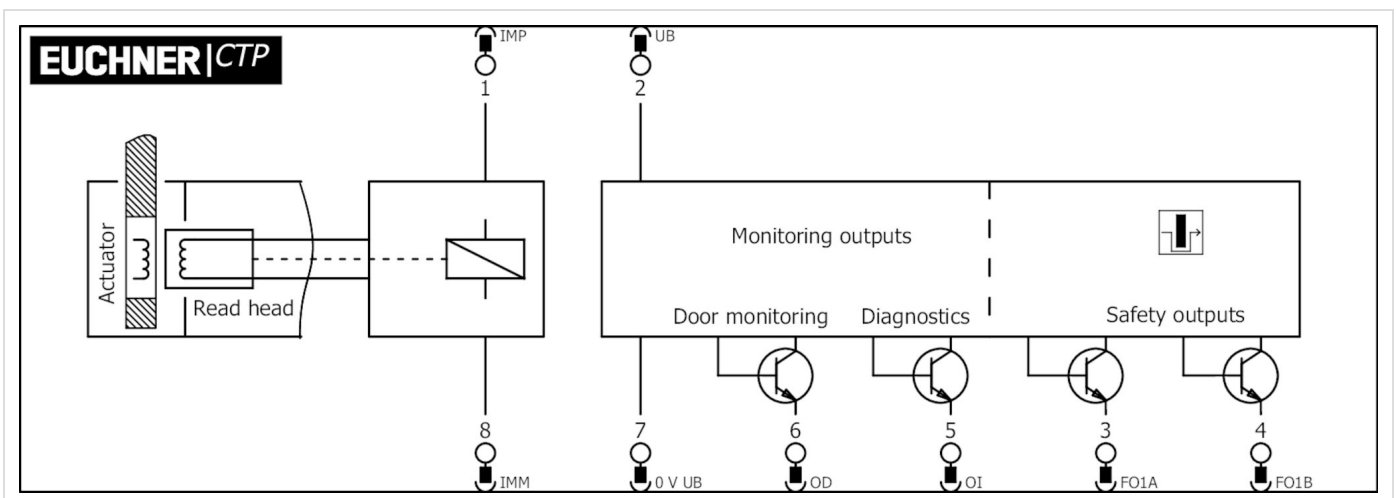


- 1 Auxiliary release
- 2 Locking screw
- 3 LEDs
- 4 Plug connector aligned

Dimension drawing



Wiring diagram



Technical data

Approvals

## Mechanical values and environment

Shock and vibration resistance	In acc. with EN 60947-5-3
Housing material	
	Safety switch housing Fiber glass reinforced thermoplastic
	Switch head cover Die-cast zinc
Weight	
	Net 0,42 kg
Ambient temperature	
	At $U_B = 24V DC$ -20 ... +55 °C
Degree of protection	IP67/IP69/IP69K (Screwed tight plug connector/mating component)
Mechanical life	1 x 10 <sup>6</sup>
Installation orientation	Any
Ready delay	max.1 s
Switching frequency	max.0,5 Hz
Connection	1 plug connector M12, 8-pin
Approach speed	max.20 m/min
Guard locking principle	Closed-circuit current principle
Locking force $F_{max}$	3900 N
Locking force $F_{zh}$	3000 N ( $F_{zh} = F_{max}/1.3$ Depending on the actuator used)
Retention force	20 N
Extraction force	20 N
Actuating force	10 N
Overtravel	5 mm

## Electrical connection ratings

Test-pulse interval	min.100 ms
Test pulses	max.0,3 ms (Applies for a load with $C \leq 30nF$ and $R \leq 20k\Omega$ )
Operating voltage DC	
	$U_{UB}$ 24 V DC -15% ... 15% Reverse polarity protected, regulated, residual ripple < 5%, PELV
Current consumption	
	$I_{IMP}$ 400 mA
	$I_{UB}$ 40 mA
Utilization category acc. to EN 60947-5-2	
	DC-13 24V 150mA (Caution: outputs must be protected with a free-wheeling diode in case of inductive loads)
Solenoid operating voltage DC	
	$U_{IMP}$ 24 V DC -15% ... +10% Reverse polarity protected, regulated, residual ripple < 5%, PELV
Fusing	
	External (operating voltage $U_B$ ) 0,25 ... 8 A
	External (solenoid operating voltage $I_{MP}$ ) 0,5 ... 8 A

Rated insulation voltage $U_i$	50 V
Rated impulse withstand voltage $U_{imp}$	0,5 kV
Connection rating	6 W
EMC protection requirements	In acc. with EN IEC 60947-5-3
Solenoid duty cycle	100 %
Degree of contamination (external, according to EN 60947-1)	3
Safety class	EN IEC 61140 III
Switching load	According to UL 24V DC, class 2 (Alternatively see operating instructions)
<b>Safety outputs FO1A / FO1B</b>	
Type of output	2 semiconductor outputs, p-switching, short circuit-proof
Switching current	Per safety output FO1A / FO1B 1 ... 150 mA
Output voltage	HIGH $U(FO1A) / U(FO1B)$ UB-1,5 ... UB V DC LOW $U(FO1A) / U(FO1B)$ 0 ... 1 V DC
Off-state current $I_r$	max.0,25 mA
Turn-on time	max.400 ms
Discrepancy time	Both safety outputs max.10 ms In acc. with EN IEC 60947-5-3
<b>Monitoring output OD</b>	
Type of output	p-switching, short circuit-proof
Switching current	1 ... 50 mA
Output voltage	0,8xUB ... UB V DC
<b>Monitoring output OI</b>	
Type of output	p-switching, short circuit-proof
Switching current	1 ... 50 mA
Output voltage	0,8xUB ... UB V DC

## Work area

Repeat accuracy R	According to EN 60947-5-2 10 %
-------------------	--------------------------------

## Other

Additional feature	Escape release actuated by pushing
For the approval acc. to UL the following applies	Operation only with UL class 2 power supply, or equivalent measures see operating instructions

## Reliability values according to EN ISO 13849-1

Performance Level	PL e
Category	4
PFH <sub>D</sub>	4.1 x 10 <sup>-9</sup>
Mission time	20 y

## Accessories

## Actuator

### Bent actuator for safety switches CTP

---



122667  
A-C-H-W-SST-122667

- ▶ Actuator bent at top
  - ▶ Two safety screws included
- 



122668  
A-C-H-W-SST-122668

- ▶ Actuator bent at bottom
  - ▶ Two safety screws included
- 

### Hinged actuator for safety switch CTP

---



122675  
A-C-H-RO-LS-122675

- ▶ Hinged actuator for doors hinged at the top
  - ▶ Two safety screws included
- 



122676  
A-C-H-RU-LS-122676

- ▶ Hinged actuator for doors hinged at the bottom
  - ▶ Two safety screws included
- 



122671  
A-C-H-RL-LS-122671

- ▶ Hinged actuator for doors hinged on the left
  - ▶ Two safety screws included
- 



122672  
A-C-H-RR-LS-122672

- ▶ Hinged actuator for doors hinged on the right
  - ▶ Two safety screws included
- 

### Straight actuator for safety switch CTP

---



126015  
A-C-H-G-SST-126015

- ▶ Straight actuator
  - ▶ Two safety screws included
- 

## Bolt

## Bolt BTC-CTP with escape release for safety switch CTP

---



**123660**  
BTC-CTP-S-TH-01-F

- ▶ Aluminum bolt
- ▶ For doors hinged on the left or right
- ▶ Lever for escape release from the danger zone
- ▶ Pushbutton in open position
- ▶ Can be locked in open position with padlocks
- ▶ Actuator included

## Bolt BTM-UNIP-S... with escape release for safety switches TP, STP, STA and CTP

---



**164196**  
BTM-UNIP-S-TH-01-F-164196

- ▶ Steel bolt
- ▶ For doors hinged on the left or right
- ▶ Can be locked in open position with padlocks
- ▶ Actuator not included

## Bolt CTP-GFK-F with escape release for safety switch CTP

---



**123658**  
RIEGEL CTP-GFK-F

- ▶ Fiber glass reinforced plastic bolt
- ▶ For doors hinged on the left or right
- ▶ Lever for escape release from the danger zone
- ▶ Detent knob in open position
- ▶ Can be locked in open position with padlocks
- ▶ Actuator included

## Bolts with escape release for safety switch CTP

---



**123655**  
RIEGEL CTP-ACF-123655

- ▶ Steel bolt
- ▶ Lever for escape release from the danger zone
- ▶ For doors hinged on the right or left
- ▶ Detent knob in open position
- ▶ Can be locked in open position with padlocks
- ▶ Actuator included

## Connection material

### Connection cable with angled plug connector M12, 8-pin, 10m

---



**113188**  
C-M12F08-08X025PU10,0-MA-113188

- ▶ M12 female plug, 8-pin
- ▶ Angled plug connector
- ▶ Cable outlet A (right)
- ▶ PUR cable
- ▶ Cable length 10 m
- ▶ With flying lead



**113189**  
C-M12F08-08X025PU10,0-MA-113189

- ▶ M12 female plug, 8-pin
- ▶ Angled plug connector
- ▶ Cable outlet C (left)
- ▶ PUR cable
- ▶ Cable length 10 m
- ▶ With flying lead

### Connection cable with angled plug connector M12, 8-pin, 20m

---



**120998**  
C-M12F08-08X025PU20,0-MA-120998

- ▶ M12 female plug, 8-pin
- ▶ Angled plug connector
- ▶ Cable outlet A (right)
- ▶ PUR cable
- ▶ Cable length 20 m

- ▶ With flying lead



**120999**  
C-M12F08-08X025PU20,0-MA-120999

- ▶ M12 female plug, 8-pin
- ▶ Angled plug connector
- ▶ Cable outlet C (left)
- ▶ PUR cable
- ▶ Cable length 20 m
- ▶ With flying lead

### Connection cable with plug connector M12, 8-pin, 5m



**115112**  
C-M12F08-08X025PU05,0-MA-115112

- ▶ M12 female plug, 8-pin
- ▶ Straight plug connector
- ▶ PUR cable
- ▶ Cable length 5 m
- ▶ With flying lead



**100177**  
C-M12F08-08X025PV05,0-MA-100177

- ▶ M12 female plug, 8-pin
- ▶ Straight plug connector
- ▶ PVC cable
- ▶ Cable length 5 m
- ▶ With flying lead

### Connection cable with plug connector M12, 8-pin, 10m



**115113**  
C-M12F08-08X025PU10,0-MA-115113

- ▶ M12 female plug, 8-pin
- ▶ Straight plug connector
- ▶ PUR cable
- ▶ Cable length 10 m
- ▶ With flying lead



**100178**  
C-M12F08-08X025PV10,0-MA-100178

- ▶ M12 female plug, 8-pin
- ▶ Straight plug connector
- ▶ PVC cable
- ▶ Cable length 10 m
- ▶ With flying lead

### Connection cable with plug connector M12, 8-pin, 20m



**115114**  
C-M12F08-08X025PU20,0-MA-115114

- ▶ M12 female plug, 8-pin
- ▶ Straight plug connector
- ▶ PUR cable
- ▶ Cable length 20 m
- ▶ With flying lead



**100179**  
C-M12F08-08X025PV20,0-MA-100179

- ▶ M12 female plug, 8-pin
- ▶ Straight plug connector
- ▶ PVC cable
- ▶ Cable length 20 m
- ▶ With flying lead

### Connection cable with plug connector M12, 8-pin, 30m



**115257**  
C-M12F08-08X025PU30,0-MA-115257

- ▶ M12 female plug, 8-pin
- ▶ Straight plug connector
- ▶ PUR cable
- ▶ Cable length 30 m
- ▶ With flying lead



**115116**

- ▶ M12 female plug, 8-pin



C-M12F08-08X025PV30,0-MA-115116

- ▶ Straight plug connector
- ▶ PVC cable
- ▶ Cable length 30 m
- ▶ With flying lead

## Function expansion

### Emergency unlocking for safety switches CTP/TP/STP

---



**099877**  
NOTENTSPERRUNG TP/STP

### Handle for wire front release

---



**124204**  
AY-HDL-124204

- ▶ Suitable for all wire front releases



**099795**  
AY-HDL-099795

- ▶ Suitable for all wire front releases

### Lock for auxiliary release for safety switches CTP/TP/STP

---



**109212**  
SCHLOSS TP GLEICHSCHLIESSEND  
C2293

- ▶ Identical locking
- ▶ Key can be removed only in "unlocked" position



**084177**  
SCHLOSS TP  
VERSCHIEDENSCHLIESSEND

- ▶ Lock unique locking
- ▶ Key removable in "unlocked" and "locked" positions



**086236**  
SCHLOSS TP GLEICHSCHLIESSEND

- ▶ Identical locking
- ▶ Key removable in "unlocked" and "locked" positions



**121917**  
SCHLOSS TP GLEICHSCHLIESSEND  
C2416

- ▶ Identical locking
- ▶ Key removable in "locked" position

### Lockout mechanism CTP

---



**123411**  
ΔF-I.C.H.123411

- ▶ Prevents unintentional closing of the door
- ▶ Can be secured with padlocks



## Release with automatic reset for safety switches CTP/TP/STP

---



**103110**  
ENTRIEGELUNG RUECKSTELLEND  
TP/STP

## Wire front release

---



**111233**  
AE-B-A1-03,0-F-111233

- ▶ Can be used as escape release or emergency release
- ▶ Automatic return
- ▶ Sheath length 3 m (rope length 6 m)



**097747**  
AE-B-A1-02,0-F-097747

- ▶ Can be used as escape release or emergency release
- ▶ Automatic return
- ▶ Sheath length 2 m (rope length 6 m)



**124770**  
AE-B-A1-06,0-F-124770

- ▶ Can be used as escape release or emergency release
- ▶ Automatic return
- ▶ Rope length 6 m (without sheath)



**096230**  
AE-B-A1-02,0-096230

- ▶ Can be used as escape release or emergency release
- ▶ No automatic return
- ▶ Sheath length 2 m (rope length 6 m)



**098314**  
AE-B-A1-04,0-098314

- ▶ Can be used as escape release or emergency release
- ▶ No automatic return
- ▶ Sheath length 4 m (rope length 6 m)



**125582**  
AE-B-A1-06,0-125582

- ▶ Can be used as escape release or emergency release
- ▶ No automatic return
- ▶ Rope length 6 m (without sheath)



**098313**  
AE-B-A1-03,0-098313

- ▶ Can be used as escape release or emergency release
- ▶ No automatic return
- ▶ Sheath length 3 m (rope length 6 m)

## Mounting accessories

## Efficient protection against tampering for safety switch mounting

---



**161344**  
AM-C-SW4-V3-161344

- ▶ Plastic inserts for hexagon socket screws a/f 4
- ▶ Efficient protection against tampering for safety switch mounting
- ▶ The packaging includes inserts for 18 screws



**161348**  
AM-C-SW5-V3-161348

- ▶ Plastic inserts for hexagon socket screws a/f 5
- ▶ Efficient protection against tampering for safety switch mounting
- ▶ The packaging includes inserts for 18 screws

## Mounting plates AM-P for safety switches CTP

---



**126026**  
AM-P-126026

- ▶ For vertical and horizontal mounting of safety switch CTP

## Mounting plates EMP-B1 for actuators for safety switches CTP, TP...A, STA, STP, TX and TZ

---



**093457**  
EMP-B1

## Mounting plates EMP-B2 for actuators for safety switches CTP, TP...A, STA, STP, TX and TZ

---



**093458**  
EMP-B2

## Mounting plates EMP-SB for safety switches CTP, TP...A, STA, STP and TX

---



**093456**  
EMP-SB

- ▶ For vertical and horizontal mounting of safety switches TP...A, STA, STP and TX

## Switch bracket CTP/TP/STP GFK

---



**096613**  
SCHALTERAUFNAHME TP/STP GFK

- ▶ Switch bracket made of fiber glass reinforced plastic
- ▶ For doors hinged on the left or right

## Contacts

🏠 EUCHNER GmbH + Co. KG  
Kohlhammerstraße 16  
70771 Leinfelden-Echterdingen

☎ +49 711 7597-0

📠 +49 711 753316

✉ [info\(at\)euchner.de](mailto:info(at)euchner.de)